

Twickenham & Richmond Tribune



Sun sets on 2024, Twickenham Green
Photo by Berkley Driscoll

27th December 2024

T&RT

Contents

TwickerSeal

TickerTape:

Rugby at Twickenham Stadium – Big Game 16

South Western Railway

The Tree Agency

Local Picture Postcard Column - Happy New Year 2025

Crusader Travel

Enjoy a magical horse drawn carriage ride in the beautiful Richmond Park

Richmond upon Thames' favourite Christmas window display unveiled

Christmas and New Year waste and recycling collections

Twickenham CC Women recruiting for 2025 season

News from Holy Trinity Church, Twickenham Green

2025 highlights at Kew Gardens Where science, art, fashion and nature collide

Gravy vs. Curry Sauce: The Battle of Britain's Chips Get a Scientific Twist

Sunborn, Gibraltar - Glamour Package

A time to dream!

A year has passed, and a New Year awaits

Greenland – A Move by Trump

2004 Tsunami

Mince Pies, Samosas and...Masala Chai?

Mark Aspen Review: Beauty and the Beast

Mark Aspen Review: The Show Queen

Christmas Tree Collection

New European Project on Career and Career Guidance Awarded to St Mary's Commences

Big Game 16

Le Crunch: A New Year's Day rugby game in 1908

Cliff Crown, Brentford chair: I'm proud of our progress in 2024

New national facility for small satellites

Alan Winter

The Royal Parks

VisitRichmond

Richmond Council

Twickenham CC Women

Holy Trinity Church

Royal Botanic Gardens, Kew

The Royal Institution

Bruce Lyons

Shona Lyons

Teresa Read

Teresa Read

Deep Patel

Mark Aspen

Sam Martin

Local Luke

St Mary's University

RFU

RFU

Brentford Football Club

National Physical Laboratory

Editors: Berkley Driscoll, Teresa Read

Soon the sun will be setting on the year 2025. TwickerSeal and all his chums at the Tribune hope you have had a good year and look forward to an even better year ahead.



2024



TickerTape - News in Brief

Rugby at Twickenham Stadium – Big Game 16

Saturday 28th December

- Harlequins Women v Leicester Tigers, KO 15:00.
- Harlequins v Leicester Tigers, KO 18:00.

Whitton, Rugby & London Roads may close for a period between 13:00 & 18:00, depending on when crowds arrive.

These roads will also close between 19:30-22:00.

The CPZ will be in operation between 11:00 and 23:00.

South Western Railway

Altered train services due to Rugby at Twickenham Saturday 28 December

Service Amendments

London Waterloo - Shepperton

- **Between 0911 and 2311**, all **Shepperton to London Waterloo** services will be diverted via **Twickenham**.
- **Between 1012 and 2342***, all **London Waterloo to Shepperton** services will be diverted via **Twickenham**. *Between 1442 and 1642, services depart at **xx:15/xx:45**.

London Waterloo – Reading

- Services will depart **earlier** from **Reading** through most of the day (**at xx:05 and xx:35**).
- Trains departing **Reading** between **1900 & 2330** will call additionally at **Putney and Vauxhall**.
- Services will also run **later** from **Richmond to Reading** before the match.

Seasons Greetings from



The Tree Agency

darryl parkin

The Treehouse
25 King Edwards Grove
Teddington, Middlesex TW11 9LY
Telephone 020 8274 0107
Mobile 07960 123580
Fax 020 8274 0119
info@thetreeagency.co.uk
www.thetreeagency.co.uk



The Tree Agency

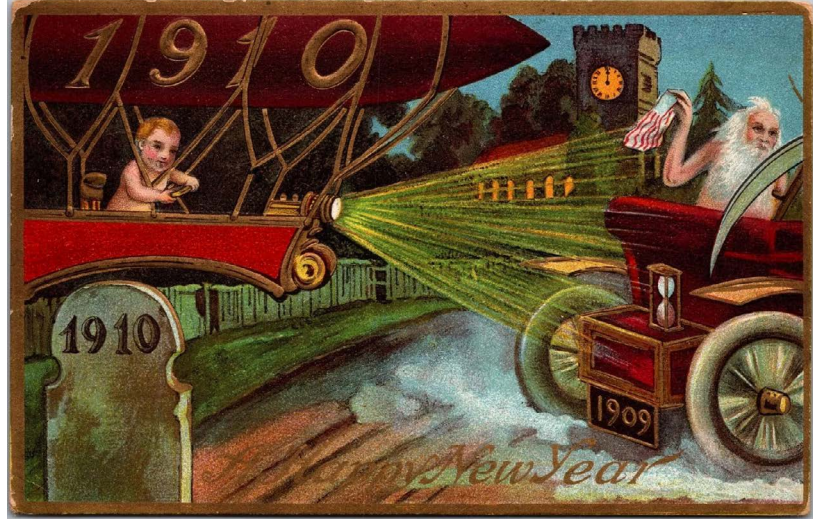
Local Picture Postcard Column - Part 281

Happy New Year 2025

By Alan Winter

Although Christmas cards are still in use these days, it was also very common practice to send New Year postcards in the early part of the 20th century.

Our first postcard this week features Old Father Time bringing in the New Year of 1910 and so was posted 115 years ago at a time when most letterboxes in the UK rattled to the sounds of New Year postcards landing on the doormat. These cards are typical of the style and sentiments expressed on postcards in Edwardian times.



New Year's Day was a normal working day back then so you can imagine some of the hangovers that many people clocked on with that morning. These days many of us seem to need a couple of days after New Year's Eve to even start thinking about going back to work.



Our next postcard shows a Lebanon Park Road, Twickenham photographic postcard scene where a standard card of a residential road has been overprinted with a New Year message in order to sell a few more postcards at that time of year. The postcard was used for the New Year of 1908 and is typical of the Edwardian style of the day.

Our final postcard is from Hampton Court Palace who also overprinted some of their stock postcards with Christmas, New Year and Easter messages to take sales

advantage of three periods in the year when their attendances were higher due to holidays and at a time when sending postcards to celebrate these periods were common.

My search for old postcards continues. I am always looking for old postcards and old photograph albums etc. The postcards can be British or Foreign, black and white or coloured and of places or subjects.

If you have any that are sitting unwanted in a drawer, in a box in the loft or in the garage or under a bed, please contact me on 07875 578398 or alanwinter192@hotmail.com I would like to see them and I pay cash!



CrusaderTravel



020 8744 0474

crusadertravel.com

Escapology Experts

info@crusadertravel.com

Your friendly local Travel Agency
established in Twickenham since 1966

With over 50 years experience we pride ourselves on being able to offer an unrivalled service with attention to detail. Come and have a chat with us in our cosy office off the Church Street Square, we are open 6 days a week from 11am until 6pm (Closed Sunday)



Enjoy a magical horse drawn carriage ride in the beautiful Richmond Park

This Christmas, experience [Richmond Park](#) like never before with a ride around the park in a six-person Park Brake drawn carriage by our majestic **Shire Horses**. Enjoy the sounds of hoofs and bells, revel in the crisp air and watch the wildlife up close while you snuggle under a blanket...and have some seasonal refreshments to truly get into the festive spirit!



- The **75-minute experience** begins at Holly Lodge, Richmond Park, where you'll be met with **refreshments**.
- You will take your place in the carriage embarking on **an hour long ride through the park** in all its winter beauty! You'll also be treated to a unique behind-the-scenes visit of the working stables.

Limited tickets available **Sunday 29th December – Wednesday 1st January.**

[Book Now](#)



Richmond upon Thames' favourite Christmas window display unveiled

From VisitRichmond

Following a public vote, the Mayor and Mayoress of Richmond announced the winner of this year's Christmas window competition on Saturday 21 December.

The Mayor of Richmond, Cllr Richard Pyne, and the Mayoress were delighted to visit this year's winning local business, [Curated Man and Curated Woman](#), to present the owners, Freya and Henry, with a hamper created by local Twickenham-based business [Ricardo's Cellar](#).



Earlier this month, 92 local businesses in Richmond upon Thames entered this year's competition and over 800 residents voted for their favourite festive window display. As a result of its popularity, VisitRichmond will be running the Christmas window competition again next year. If you are a local business and wish to register for the 2025 competition or find out more, please email josephine.cachia@richmond.gov.uk.

#ShopLocal and stay festive

Our small businesses make up the core of our community and help to create vibrant, unified neighbourhoods. This gifting season, why not save on travel and delivery costs and give some extra support to our fantastic independent businesses when they need it most? Browse the vast selection available in each of our town centres and find the hidden gems in your area on the [Shop Local website](#).



Christmas and New Year waste and recycling collections

From Richmond Council

Your waste and recycling collections will change over the festive period. There will also be changes to garden waste collections, and we will be offering Christmas tree collections.

Waste and recycling collections

We will be running a revised collection schedule from Wednesday 25 December 2024 to Saturday 4 January 2025.

Normal collection day	Revised collection day
Wednesday 25 December	Friday 27 December
Thursday 26 December	Saturday 28 December
Friday 27 December	Sunday 29 December
Monday 30 December	No change
Tuesday 31 December	No change
Wednesday 1 January	Thursday 2 January
Thursday 2 January	Friday 3 January
Friday 3 January	Saturday 4 January

Bulky waste

Bulky waste collections will be suspended between Monday 23 December 2024 and Friday 3 January 2025.

Garden waste

Garden waste collections will be suspended from Monday 6 to Friday 17 January 2025. Collections will resume on Monday 20 January.

Food waste

To support food waste recycling during the holidays, residents who receive this service can pick up a [free roll of compostable caddy liners](#) from their local library or the Civic Centre in Twickenham.

Christmas tree recycling

We offer both a drop off and collection service for real Christmas trees. Find out more about [Christmas tree recycling](#).

The Christmas tree collection service was enhanced in 2024 to include the ability for residents to report an abandoned tree or fly tipped tree. It included GIS to pinpoint the tree's location and the ability to upload a photograph. This worked well and will be repeated in January 2025.

Twickenham CC Women

are recruiting for the 2025 season.

ABOUT US

Our fun-focused, yet competitive team is perfect for new and experienced players alike.

We prioritize team spirit and enjoyment, playing across a League (30 overs) with matches on a Sunday. Therefore perfect for anyone who has a love for cricket.



Indoor training will be starting end of January, location and times to be confirmed.

Summer training Thursday Evenings at Twickenham Green

CONTACT INFORMATION

For any enquiries regarding the women's team please contact:

twickenhamccwomen@gmail.com
or visit our website



News from Holy Trinity Church, Twickenham Green

We welcome you for the following services:

- Sunday 29 December – 9am – Holy Communion
- Sunday 29 December – 10.30am – Holy Communion
- Sunday 5 January – 9am – Holy Communion
- Sunday 5 January – 10.30am – Holy Communion

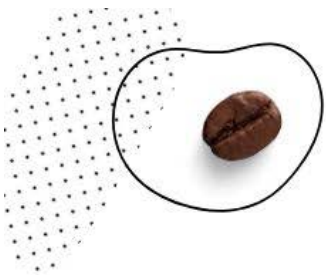
10.30am services also available on our YouTube Channel

Upcoming Events in 2025

We're looking forward to getting social again in 2025. Do take a look at our Events page on the website for more details on all the events coming up in the early part of 2025 [Events – Holy Trinity Twickenham](#)

The Green Pop Up Café

The Café will be taking a break for the holiday but we look forward to seeing you again on Thursday 9 January 2025.

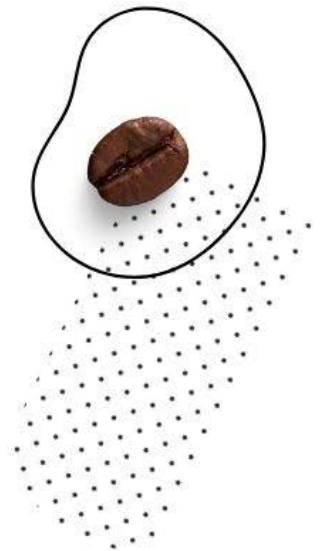


THE GREEN POP UP CAFE

THURSDAYS

10.30–12.00

The Green Room
Holy Trinity Twickenham
Twickenham Green
TW2 5TS



A community space where
everyone is welcome to pop in
for refreshments, friendly chat and activities



HOLY TRINITY TWICKENHAM

2025 highlights at Kew Gardens

Where science, art, fashion and nature collide

From Royal Botanic Gardens, Kew

Throughout the year ahead at the Royal Botanic Gardens, Kew, and at Wakehurst, Kew's wild botanic garden in Sussex, visitors can enjoy a range of exciting new events, exhibitions and horticultural highlights.



From April, Kew Gardens will showcase the spectacle and resonance of trees with an extensive programme across the Gardens. Starting with a brand-new gallery exhibition in the Shirley Sherwood Gallery of Botanical Art, *The Power of Trees* will celebrate these magnificent and inspiring giants, exploring how they continue to inspire artists around the world. A stunning video installation *Horizontal-Vaakasuora* by contemporary **Finnish artist Eija Liisa Ahtila** will sit alongside a new series of works by the artists of the Bedgebury Pinetum Florilegium Society, showcasing the stunning detail and beauty of **Bedgebury National Pinetum's** conifer collection.

From early May, *Of the Oak*, a large-scale installation at Kew Gardens created by the experiential artist collective **Marshmallow Laser Feast** will mark **Kew's first-ever outdoor digital commission**. Showcasing one of the Gardens' most magnificent trees, The Lucombe Oak, in an entirely new light, this new installation will take visitors on a **multisensory journey**, using extensive real-world data to untangle the invisible magic at work within each leaf, branch and root of this astonishing tree. Visitors will explore a **deep connection to the majestic tree's history and resilience**, as they peer through its unique characteristics and learn about its vital role in the ecosystem.

From summer onwards, we will be celebrating the 25th anniversary of the Millennium Seed Bank (MSB) at Wakehurst, Kew's wild botanic garden in Sussex. Home to the world's largest collection of seeds from wild plants with 2.4 billion seeds representing over 39,000 different species of the world's storable seeds, it is the most diverse wild plant species genetic resource on Earth, safeguarding wild plant diversity through vital global partnerships. For Wakehurst visitors, the summer will offer a chance to show the interconnectivity between humanity and horticulture, shining the spotlight on the global partnerships that have helped to build the MSB into what it is today. Through a series of art in the form of ceramics, AR visualisation, soundscapes and more, visitors will be encouraged to draw a connection between themselves and the inspiring science taking place at Wakehurst.

In Summer 2025, Kew Gardens will unveil its new **Carbon Garden**, a bespoke landscape created to highlight carbon's essential role as a building block of all life on Earth. This garden will explore the invisible cycle of carbon through soils, plants, fungi and us, emphasising the vital role plants and fungi play, as our allies, in climate regulation. Created by Kew's horticulturists, scientists and designers, this innovative space explores how plants capture carbon dioxide and provide nature-based solutions towards sustainability, inspiring hope and personal action.

From **late September**, attention will turn to the **world of fashion** when visitors to Kew's iconic Temperate House will be able to uncover how plants and fungi are helping to create sustainable solutions with **Material World**, a six-week festival encompassing a series of innovative installations, surrounded by some of the rarest plants on the planet. With a central installation from Australian Nigerian artist **Nnenna Okore**, *Material World* will also include a series of spectacular After Hours events, encompassing everything from sustainable shopping to interactive fashion displays.

In autumn 2025, **Kew's Shirley Sherwood Gallery of Botanical Art** will be transformed to showcase two contrasting complementary exhibitions connecting **traditional Indian Art** with contemporary art practice. For the first time, *Flora Indica* will put on public display a selection of the most outstanding works from Kew's South Asian botanical illustration collections. Featuring a series of stunning art commissioned by British botanists and created by Indian artists, this landmark exhibition will recover the lost histories of these extraordinary works, tell the stories of forgotten artists and reinterpret the fluctuating history of these astonishing collections. Alongside this, a tandem exhibition, *Botanical Tales and Seeds of Empire*, by renowned contemporary artists **The Singh Twins** will showcase a selection of new works, fusing traditional Indian and contemporary Western influences in their signature 'Past-Modern' style.

Other highlights throughout the year include the return of the ever-popular **Orchid festival in February**, a celebration of blossom throughout the spring and seasonal events including *Christmas at Kew* and *Glow Wild*. New horticultural highlights at Kew Gardens also include the Winter Garden and the Wild Rose Garden, which will be in full bloom from June onwards. Further details can be found in the listings information below.

At Wakehurst, the much-loved **Nature Heroes programme** continues throughout the year, with new badges available for the now-iconic Nature Heroes cape. Children can get stuck into missions inspired by dinosaurs, seeds, fungi and more, fostering a love for the natural world.

The Royal Botanic Gardens, Kew, is dedicated to harnessing the power of plants and fungi to end the extinction crisis and secure a future for all life on Earth. With Kew's world-leading research, global partnerships and beloved gardens – home to the world's most diverse collections of plants and fungi – Kew is using its trusted voice to shape policy and practice worldwide. As a charity, Kew relies on the critical support of its visitors, not only to sustain the gardens, but to protect global plant and fungal biodiversity for the benefit of our planet and humanity.

Royal
Botanic
Gardens **Kew**

Gravy vs. Curry Sauce

The Battle of Britain's Chips Get a Scientific Twist

From The Royal Institution

When it comes to chips, Britain is a house divided: gravy or curry sauce? The age-old rivalry between the North and South of England just got scientific, and who better to weigh in than the nation's favourite twin doctors, Chris and Xand van Tulleken?

Dr. Chris van Tulleken, this year's Royal Institution Christmas Lecturer, and his brother Dr. Xand van Tulleken are adding some science into the chip shop debate, offering their argument on which condiment truly reigns supreme.

Team Gravy: A Northern Triumph

Dr. Chris says, "The North has it right with gravy on chips. Meat gravy delivers a punch of umami – the savoury flavour scientists say we crave – and it's supercharged when paired with the saltiness of chips. Together, they create

a richer, more satisfying taste explosion that warms you to your core. It's the perfect plate of comfort food!"

Team Curry Sauce: A Southern Delight

Dr. Xand counters, "The South has mastered the art of balance. Chip shop curry sauce is spiced and sweet, designed to complement the salty crunch of chips perfectly. According to science, sweetness offsets saltiness for a flavour combination that's just about as tasty as possible. It's harmony in every bite!"

Both brothers will appear in the Royal Institution Christmas Lectures, which air on at 9pm BBC Four and iPlayer between 29th and 31st December, with Dr. Chris leading the charge to reveal the science of food and its amazing effects on our bodies and brains.

The 2024 CHRISTMAS LECTURES will be on BBC Four at the end of December on these dates:

Sunday 29 December, 9pm BST: Lecture 1 - From Tastebuds to Toilet

Monday 30 December, 9pm: Lecture 2 - How Food Makes Us

Tuesday 31 December 9pm: Lecture 3 - The Big Food Hack

More info [HERE](#)

All three lectures will be available on iPlayer in the UK from the 29 December. We will also make them on YouTube for everyone outside the UK on the 31 December.



GIBRALTAR

sunborn

5 - STARYACHT HOTEL
CASINO RESORT



SUPERYACHT GLAMOUR PACKAGE ON NEW YEAR'S EVE



PACKAGE INCLUDES:

WELCOME AMENITIES | DAILY BREAKFAST BUFFET
1 X INFINITY SPA VOUCHER (£50)

NEW YEAR'S EVE DINNER PARTY (VENUE NEEDS TO BE PRE-BOOKED, SUBJECT TO AVAILABILITY)
AFTERPARTY

BUBBLY BREAKFAST BUFFET 1ST OF JANUARY
LATE CHECK OUT AT 5 PM ON 1ST JANUARY

Book 30th December to 2nd January, 3 nights £840

For 2 guests in a Super Yacht Superior Room

Book 31st December to 1st January, 1 night £490

For 2 guests in a Super Yacht Superior Room

Terms & Conditions: Offer subject to availability

Package is subject to availability. Cannot be combined with other bookings. Reservations must be made direct via phone or email and cannot be made via third parties.
Pre-payment is required and bookings cannot be cancelled or modified

TO BOOK CONTACT: +350 200 16900 | RESERVATIONS@SUNBORNGIBRALTAR.COM

A time to dream!

By Bruce Lyons of Crusader Travel



It is that magical time of year, when the Travel Industry launches programmes to entice people to travel and with it comes little carrots to make the offerings palatable - and this year in some places there are some golden opportunities. Not just sun but a real travel adventure awaits- one that has long been on many people's MUST DO lists.

With the return of more than one a week flights to Luxor, we are offered a surfeit of Nile Cruises (last winter, there was just one whereas this winter, there are 5 flights!) More than that, more Nile Cruise ships have returned to the marketplace and there is at last some competition. For those that just want to cruise up this majestic of all Rivers and just watch the Biblical scenery as you pass by with Pharaonic Temples at the shoreline – you can do this “all found” with flights and transfers and full board from just over £700 per person. An amazing opportunity for those who just want to chill out, orb the elderly or those with limited funds and mobility and who don't really want a big package of excursion, but would be happy with one or two.

For the real McCoy you can pay up to £4000 per person and more, however there are good deals to be had this winter (at least for now that is) The Land of Pharaohs on an iconic Nile Cruise vessel, on one of the most famous rivers of the world, is a holiday extraordinaire. You'll visit Karnak Temple (at the edge of Luxor/Thebes) and can experience the Sound and Light experience there, with Richard Burtons narrative immersing you in Pharaonic Folklore.

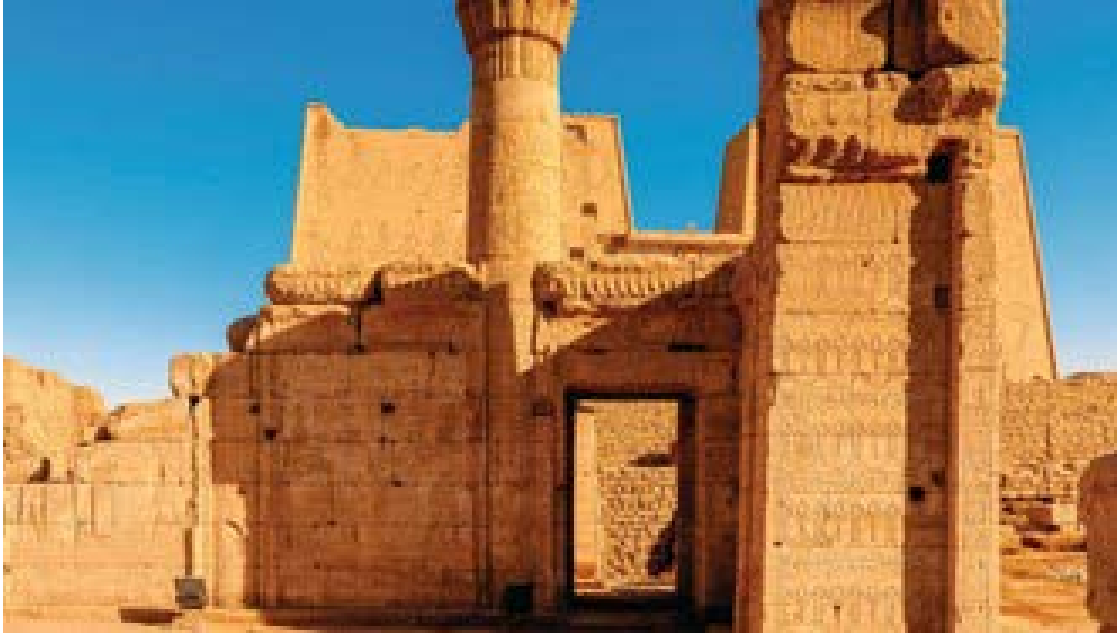
Best to rest after this as tomorrow you will visit the Valley of the Kings and more – perhaps you will dream of Howard Carter and how he discovered the Valley all those years ago or get



muddled up (in your dreams) with Harrison Ford Sean Connery and the Raiders of the Ark – you will also visit the tomb of Tutankhamun and after this, you can rest on the upper deck in the shade as you cruise up river – wonderful scenery and wild life too.

Next you visit Edfu (Home to the Temple of Horus) – all these

stops you have excursions with a qualified Egyptologist and then on to Kom Ombo (the Temple dedicated to two Gods) As you cruise you'll see the timeless Feluccas and jambalayas plying their River trades as they have over the centuries.



Finally, you reach Aswan, home to the High Dam that was created in the last century to create Lake Nasser. From here you can take an optional Excursion to Abu Simbel to see the unfinished Obelisk and the Philae Temple – a lengthy trip but with rewarding experiences. At the end you overnight in Luxor

again – a bustling Nile city with an amazing Market & many wonderful museums.



Your Cruise vessel for the seven nights is the Al Horeya and on the 30th of January this, including a special discount, would cost £1434 in a superior French Balcony cabin on an all-inclusive basis, excursions – flights – transfers, all included! Flights are from Gatwick Other dates & Monday and Thursday's sailings are also available –

Believe me, this will be the best season for many a year to Cruise the Nile. You could add Cairo or a short stay on the Red Sea – on request.

Pop into Crusader, at 58 Church Street, for a chat or a brochure. Egypt and Nile Cruising happens to be a speciality of ours 😊



A year has passed, and a New Year awaits

By Shona of Crusader Travel



This last year has been one many trials and also quite a few tribulations. The saddest experience for me, this year, was losing our Cat Stevie, who one day many years ago followed us home. He was a stray cat, and we had let him stay in the office and one night when walking home we turned around and he was right behind us. That was about 15 years ago, and we never really worked out his age, but we think he was well over 17 when he died.

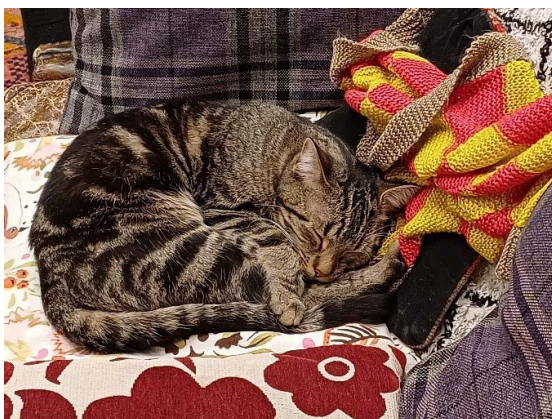


He had been my mum's constant companion, as she had been very unwell for many years and had started staying at home a lot these few last years, since Covid really and Stevie sat by her side every day and night, taking a few breaks to eat etc but that was it really. They say Cats can sense when their humans are unwell or stressed and they often will sit beside you and cuddle you at such times. My lovely mum, died in April 2023 and



I think Stevie just couldn't understand what had happened to his companion. He would at first stay behind when we came home, hoping and thinking I think, that she would be coming behind us, he would often sit on the doorstep waiting for her. He would look through the house at first thinking she must be somewhere. They say that pets quite often exhibit this kind of behaviour as they just don't understand, quite reasonably why someone in the family isn't coming home again💔

Stevie, last September 2023 started becoming unwell and we took him to the vets, and they said quite a few teeth needed to be removed. That did seem to work, and he seemed quite well, but about a year later, he again seemed a bit under the weather and we took him quite a few times to the vets but in fact each visit actually seemed to make him worse. Within a month he really had gone from being quite an active cat, jumping up on chairs and tables and beds to being really disabled, it was incredibly sad to see him like that and me and my dad would take it in turns to sit at home with him, and try and feed him and make him as comfortable as we could but on Sunday the 1st of December in the early hours of the morning his body gave up and he died in my arms.



On Sunday the 15th of December, my dad and me travelled by bus and train and went to Battersea Cat home to see if we could get a rescue cat. We had seen Pablo's details on their Cat Gallery and knew quite a bit about his character before we met him. Nothing can replace our lovely Stevie, but the house felt very empty, and we thought we could give a rescue cat a loving home. So, we met Pablo and brought him home with us, he is very sweet, His date of Birth is the

25th of March 2024, so he is 10 months old now. He has to stay in a month, so that he will not become disorientated and get lost when we let him explore outside, but he is getting quite bored and doesn't seem too interested in the toys we try (he seems to have a very limited attention span 😞) and tempt him with, but he does love sitting by the window watching the birds!



So, this Christmas my dad and me, stayed home and had a quiet but lovely and peaceful Christmas with Pablo. We did a little gardening and cycled round the park. I couldn't think what to cook as I try and make our meals as nutritious and healthy as possible & although I am a veggie, my dad isn't, but even a Turkey leg would have been stupidly big, but just a day or two before Christmas day we enjoyed watching Jamie Oliver on TV together, making a Brussel Sprout and Chestnut pie. It looked great so I made that and also roast chicken for Bruce and roast aubergines and potatoes for the 2 of us. Lots of our kind client friends, colleagues and neighbours had sent us cards and presents, it was lovely to see all the cards and to open a few presents on Christmas Day. We felt loved and I think it gave me and my dad some much-needed solace after losing my lovely mum, Hedda and Stevie in these last 2 years. Some lovely clients had even given us homemade Christmas chutneys from their allotment and a little bottle of lovely beer which we had with our lunch.



I don't know what the new Year will bring, but I hope we will stay busy as our office, our clients and our work are a great solace to us and last year was good, business wise & interesting. We have worked hard and made as many savings as we could. We managed to get through Covid and the years of relentless refunds and have pretty much paid off the government loan now and our bank balance is healthy. We have made lots of changes in our personal lives as well, as the saying goes, what doesn't kill you, makes you stronger... We wish all our lovely client friends a happy, magical and peaceful 2025.

Greenland – A Move by Trump

Teresa Read



A day or so before Christmas the BBC published an article with the headline “Denmark boosts Greenland defence after Trump repeats desire for US control”. The report stated that Greenland’s Prime Minister has said that Greenland is not for sale.

Greenland is an autonomous territory of the Kingdom of Denmark (an EU member) with its own parliament and local government; Denmark is responsible for foreign and security policy. The EU provides funding for Greenland’s sustainable development, education, and green growth, the 2021–2027 allocation totalling €225 million.

A new international airport was opened in Nuuk, Greenland’s capital, at the end of November 2024. The runway is 2,200m and is suitable for larger aircraft from around the world.

It has been stated that Denmark is to invest 1.5 billion dollars in Greenland’s defences.

Greenland remains a full member of the Council of Europe and NATO.



Aurora over Thule Air Base in 2017

Greenland Photographs and Information

<https://worldinfozone.com/gallery.php?country=Greenland>

2004 Tsunami

Teresa Read

During the years before and after the 2004 Tsunami I was in touch with a number of schools around the world through the World InfoZone project. Here are a few memories from twenty years ago.



Postings from Teachers:

“On 26 December 2003, the day following Christmas Day, an earthquake in Iran devastated the area around the city of Bam (6.5 on the Richter scale). It is estimated that over 40,000 people lost their lives in one of the worst natural disasters during the last decade.”

“Exactly one year later, on 26 December 2004, a quake occurred under the sea near Aceh in north Indonesia (8.9 on the Richter scale); this produced a tsunami, causing flooding and destruction in Bangladesh, India, Indonesia, Malaysia, Maldives, Myanmar, Thailand, Seychelles, Sri Lanka, Somalia, and Kenya. The death toll is around 150,000 - 1 January 2005. ... Re-estimated at more than 226,408 on 18 January 2004.”

Teacher, China (27 December 2004)

The huge tidal waves swept ashore and killed many people in Asian countries. Such a disaster was told would happen once in a century.

Teacher, Hungary (27 December 2004)

I was terribly shocked when I saw the reports on TV today. Here, in Hungary we are so far from that place, but I feel great empathy with the people who suffer from the tidal wave disaster.

Teacher, UK (27 December 2004)

I am amazed that no one was able to give warnings of the tsunami. It just goes to show how unprepared and insignificant we are in the face of natural disasters.

Teacher, Sri Lanka (29 December 2004)

We are ok but some of the students' relatives who worked in coastal areas are missing.

Postings from Students:

Student, Siberia, Russia (27 December 2004)

We feel very sorry about the unexpected tragedy. How it was able to happen without any warning and predictions?

Student from Croatia (28 December 2004)

This time modern technology has failed to inform people of the region to protect themselves from tsunami waves. How is it possible today? How many weather forecast satellites are there in the Earth's orbit? Japan has got special instruments for earthquakes. All those countries had to be informed, and people would move from the ocean shores and find shelters. Tsunami travels at about 500 -700 km per hour. In my opinion, many people could be informed by radio, TV and via mobile phones.



Baiturrahim Mosque survived the tsunami in Ulee Lheue, Banda Aceh



Tsunami inundation height can be seen on a house in Banda Aceh



A village near the coast of Sumatra lies in ruins

Mince Pies, Samosas and...Masala Chai?

By Deep Patel

~Life through the eyes of a Twickenham shopkeeper~



A few days on and my shop is STILL buzzing with the energy of our Community Christmas party!!! If you came along on Christmas day, thank you for coming...but for those of you who were otherwise engaged (or just didn't want to see me) here is a little summary of the fun and festivities of the big day...

The day began for us bang on 12pm and there were already a few locals waiting to come in, one at the front of the line had been waiting there for an hour he said...he was a young boy armed with a chocolate orange in his hand...as soon as I opened the shutter he said he was waiting and had got this chocolate orange for me as he wanted to apologise to me for disturbing me...it happened so that he had a parcel delivered to our shop (we are a parcel delivery shop also) and it was his younger brother's Christmas present...he had forgotten to collect it from us on Christmas eve and was very worried about his brother waking up without having his present under the tree! It was my pleasure to help...I felt like "Santa's little helper" and it was a lovely feeling.

Within five minutes of opening up our shop, the entire shop was full! So many people and such a lovely energy...every single persons face beaming with a smile that would put even the Cheshire cat's grin to shame, it was wonderful...like being in some kind of wonderland... then the magic really started when Pallu (my mother) came out from the back with a huge tray with layer upon layer of her famous crispy, golden vegetable samosas and spring rolls... the aroma filled the entire shop and everyone stopped what they were doing to look...the aroma slowly pulled people towards the samosas and spring rolls, like a huge mass of rock in outer space pulling debris towards it...(I'm not calling my customers debris by the way, just for comparison sake you understand). Pallu smiled and started dishing them out to the guests of our community party, one after the other, within minutes, the tray was completely empty and Pallu said "don't worry, there are many more where they came from!"...at that moment Shashi (my father) walked out from the back with a HUGE flask full of his special blend of masala

chai (it's the same recipe that his great, great grandmother used over one hundred years ago!). Once Shashi had poured a few cups, of his masala chai, a few more were requested and before he knew it, the huge flask was completely empty...a few days prior to our community party, my brother (Meet) and I had told my parents that they had got it all wrong, and that the fine folk of Twickenham would in NO WAY be interested in samosas and masala chai on Christmas day...my brother and I were trying to explain to our parents that this was NOT Diwali, it was Christmas...people like mince pies and Christmas cakes at Christmas...NOT samosas and masala chai...but my parents argued back to us saying "these are NOT just samosas, these are INDIAN CHRISTMAS TREES"...I told them just because samosas are triangular, doesn't make them Christmas trees...all samosas are triangular...all through the year...regardless of Christmas time or not...but our parents just ignored us and carried on with their plans of making masala-chai and "Indian Christmas trees" (samosas to you and I)...and I hate to say it, but I am very glad that my parents did ignore us and stuck to THEIR plans, because EVERY SINGLE PERSON at our community Christmas party was going for a samosa (or three) and a few cups of my father's great, great, grandmothers blend of masala chai whilst ALL the mince pies and Christmas cakes that my brother and I had put out on the table for customers to take remained COMPLETELY untouched by anyone at all...we couldn't believe it...maybe it was true what they say?...maybe parents really always do know best? In any case, everyone who came into the shop that day entered with a big smile on their face, but left with an even bigger smile on their face having had my mother's samosas ("Indian Christmas trees") and father's special one hundred year old recipe masala chai...and it was right there and then that it occurred to me...Christmas wasn't really about "Christmassy" things...it was about making others happy, making people smile...and if that was through samosas and masala chai rather than mince pies...what did it matter? The outcome was what was important, the end result...and if the guests that came to our Meet & Deep newsagents community party left happy on Christmas day, then we had succeeded in achieving what we had set out to achieve in the first place...to simply share a little happiness with those around us...because in the end...isn't that what Christmas is all about?...





Until next week, enjoy the festive break dear readers, and if any of you happen to be passing by Meet & Deep Newsagents on Hampton Road (TW2 5QB), do pop in and say hello...it's always a pleasure to meet readers at my shop!

Remember...

“It’s not the things themselves that matter...it’s the outcomes...”

MY CREATURE-KINDNESS TIP OF THE WEEK...

STOP SPIDERS

(without harming them for good-karma)

Sprinkle peppermint oil or rosemary powder where they come...Olbas oil does the trick too! They will stop coming without you having to harm them...light citronella candles or burn peppermint oil in aromatherapy tea light diffusers to stop them coming...you will get blessings in your life or have good karma for choosing a kind way too! This remedy also works to deter virtually any insect without harming them...like it & share it!

For ANY specific tip to stop any “pest” or insect KINDLY (for good karma/blessings), email me: thedeepatel@gmail.com or join my Facebook page: “INSECT LOVERS UNITE”

Beauty and the Beast

by Alan McHugh, additional material by Pete Firman

Crossroads Pantomimes at Richmond Theatre until 5th January

Beauty and the Beast is an old story, revisited in 1740 to amuse the Sun King by two ladies-who-lunch at the French court, “a tale as old as time”. Add a dame and a name, a hapless comic for our sympathy (ahHr!) and a fairy spirit for our mystery (ooH!) and you have a traditional pantomime, but with the pizzazz of a Crossroads pantomime, this version zings. Tim Oliver’s lighting designs create striking scenes, including a recurring skyscape of the globe of the earth like a NASA image from space.



Our heroine is Belle, poor, pretty, and popular. Honesty, truth and kindness are her paramount principles. Belle is played by newcomer Hope Dawe with sweet charm and fearless directness. And she dances and sings beautifully. The Beast is an anti-hero, since he is Prince Sebastian disfigured as punishment for being beastly to all and sundry, especially an “old beggar woman” who visits the palace grounds with a rose. Luke McCall, moving from major West End roles in *Phantom of the Opera* and *Les Mis*, makes a very dignified Beast. McCall’s rich and powerful baritone delivers the turning point in the story in his “This could be love”



Jason Leigh Winter doesn’t underplay the villainy of the baddie Flash Harry, and he knows how to flex the pecs, and sex-up the biceps, as the poseur they all love to hate.

Our dame is Betty Bouffant, Belle’s mother, an exaggerated extravaganza of flowery frocks and colourful coiffure. After years as an ugly sister, Ben Stock is flying solo and clearly enjoying it, and not wasting a moment to camp up the character.

Dame (in the non-panto sense) Maureen Lipman is one of our most prolific and long-standing Names. She plays Mrs Potty, the housekeeper to the beast-prince. Dame Maureen knows how to quip and ad-lib, as things don’t always go

smoothly. It's that panto audience! She makes the customary grand entrance: in a veteran (no pun intended) car, that wouldn't look out of place (maybe) in the London to Brighton Run.

Mrs Potty's son is Silly Billy (because he's a little Potty?), the hapless comic lead. He has strong competition in wooing Belle, after the reformed prince and the un-reformable Flash Harry. Silly Billy is undoubtedly funny, and selflessly kind, but ... he misses out on Belle's third criterion for a love-interest!

And, although a general good egg, he has been known to tell a fib, so he has to submit to the Trunk of Truth, a sort of strip-poker lie-detector. Then we see ... well, if he were Scots, we would learn the answer to that old question. As Silly Billy, Pete Firman is the stand-out performer, motoring the show with irrepressible energy, not only with sharp and bright comedy, but as a consummate stage conjurer. Sitting on the edge of the stage, his comedy is given a foil of pathos, as he sings about the nature of (unrequited) love and breaks up the string of a floating red balloon. But, when he stands the string is intact. Even for risk-taking panto performers, bringing children ad-hoc onto the stage can be hazardous. Firman handles the oldest stroppey one brilliantly. When only the shyest child is left he gives her the red balloon, and she wandered off looking like a Banksy mural.



The Beast's death, on the end of Flash Harry's sword, is most moving. When Belle declares her love for him, the spell is broken and The Enchantress can resurrect The Beast as the handsome wholesome Prince Sebastian. The Enchantress is played by another newcomer, Cherece Roberts, who enchants with her lush "tale as old as time".

The dance ensemble under choreographer Jenny Thomas, fresh from *Strictly*, creates memorable creatures of fright, including flitting ghosts and attacking red-eyed wolves.

Pierce Tee on keyboard and his musicians produce an ebulliently energetic wealth of versatile music. Director, Paul Robinson's "spellbinding pantomime" delivers the full works in *Beauty and the Beast*, a traditional pantomime, plus magic galore, a fun retelling of the tale as old as panto-time.

Read Mark Aspen's review at www.markaspen.com/2024/12/12/beauty-beast-rt

Photography by Danny Kaan

The Snow Queen

by Hans Christian Andersen, adapted by Anna Wheatley
Reading Rep Theatre, Reading until 31st December

The Snow Queen is a whimsical and heartfelt adaptation of the classic fairy tale, bringing Andersen's fantastical elements to life with depth and charm. Director Paul Stacey has infused new life into the familiar story, breathing emotional depth into the characters to create a captivating experience.

Set in a world of snow and magic, *The Snow Queen* follows the journey of Gerda as she embarks on a perilous adventure to rescue her friend Kai from the clutches of the Snow Queen, who has cast him under a powerful spell. The narrative's universal themes of love, bravery, and friendship come to the fore.



Orla O'Sullivan's portrayal of Gerda is captivating, bringing a refreshing sincerity and strength to her character, as she captures Gerda's determination, kindness, and vulnerability with exceptional nuance. O'Sullivan's emotional range is compelling, navigating Gerda's transformation from a scared girl into a courageous heroine and imbuing the character with warmth and authenticity.

Mark Desebrock's portrayal of Kai is equally impressive, and his emotional depth adds a layer of complexity and modernity to the story. Desebrock captures Kai's inner turmoil as the Snow Queen's enchantment slowly consumes him, and he instils the character with a haunting quality that makes his eventual redemption feel all the more poignant.

Charlotte Warner's portrayal of Ragna, the storyteller at the heart of the production, guides us masterfully through the story's unfolding events. She offers a delightful balance of humour and skill, with exceptional comedic timing. Her ability to effortlessly slip into various characters brings a playful and engaging energy to the stage.

The engaging ensemble cast, including Niall Kiely who also ably shifts between several characters make the characters relatable and accessible.

The simple design effectively conveys the magical, otherworldly elements of the story. The use of lighting to suggest the frosty, imposing presence of the Snow Queen on the wind creates a sense of atmosphere and tension without overwhelming the intimate nature of the performance.

The framing of the stage space and the use of projection gives feel of peering into the world of the story. Two houses opened like a child's dollhouse, while brilliantly mastered puppets evoke the magical world. Yet the minimalist design allows the actors' performances to remain at the forefront.



What makes this production of *The Snow Queen* so special is its ability to strike a balance between magic and realism. While the story is fantastical, it is grounded in genuine human emotion. Each of the cast – are an essential thread in the tapestry of the production, and their collective energy makes for an enjoyable, thought-provoking evening at the theatre.

Read Sam Martin's review at www.markaspen.com/2024/12/07/snow-queen-rr

Photography by Harry Elletson



LOCAL LUKE'S TREES

CHRISTMAS TREE COLLECTION

**COLLECTION DATES:
4TH - 5TH JANUARY 2025**

**PLEASE ENSURE ALL DECORATIONS ARE
REMOVED**

£8

**WE ACCEPT CASH OR CARD ON
COLLECTION**

**CONTACT: LUKE - 07795 284682
LOCALLUKE15@GMAIL.COM**

St Mary's University

New European Project on Career and Career Guidance Awarded to St Mary's Commences

The Critical Perspectives on Career and Career Guidance (COCAG) initiative, which was awarded to St Mary's University, Twickenham (SMU) earlier this year, commenced in October and will last for four years.

The [*Critical Perspectives on Career and Career Guidance*](#) (COCAG) initiative, which was awarded to St Mary's University, Twickenham (SMU) earlier this year, commenced in October and will last for four years.



The SMU team members are Dr Silvia Riva as Participant Member & Management Committee Member, and Dr Marcelle Fernandes-Holder and Dr Lori Minini as Participant Members.

The initiative brings together scholars across Europe and beyond to examine how careers are evolving, and to consider necessary responses from public policy and practice. The project will explore:

- How can we understand the challenges and changes to careers today?
- How should policymakers address these challenges?

- How can career guidance adopt a critical approach to respond more effectively?

COCAG hopes to spark discussions, encourage publications, build research connections, and promote new research directions. It will also communicate findings to policymakers and practitioners.

A key aim of COCAG is capacity building, particularly for Young Researchers and Innovators, by offering networking, collaboration, and development opportunities.

The project will enhance collaboration among [COST Member Countries](#), Near Neighbour Countries (NNC), and International Partner Countries (IPC), with a focus on Inclusiveness Target Countries.

Additionally, it will strengthen the link between research, practitioners, and policymakers to exchange and expand knowledge in the field.

[Find out more here.](#)



St Mary's
University
Twickenham
London

PARTNER OF BIG GAME
**CHARLES
STANLEY**
Wealth Managers



T H E W O R L D I S O U R S T A G E



Harlequins

**BIG
GAME 16**



**HARLEQUINS V LEICESTER TIGERS
DOUBLE HEADER**

SATURDAY 28 DECEMBER | ALLIANZ STADIUM, TWICKENHAM



Le Crunch

A New Year's Day rugby game in 1908

From RFU

The first and only time England Rugby played an official game of Test rugby on New Year's Day was against France in 1908. It was just the third meeting between the two teams but the fixture, now known as 'Le Crunch', has gone on to be played more than 100 times.

In the previous two matches, England had won 35-8 in Paris in 1906 before claiming a convincing 41-13 win back in London the following year.

However, in 1908 England Rugby returned to the French capital to the Stade de Colombes to take on a side that had improved steadily since playing its first official game just two years prior against the All Blacks.

As a sport, rugby is often played in tough conditions, but back in 1908 the weather did its best to put the players off as temperatures dropped to as low as -11 on New Year's Eve.



The French Rugby team for the New Year's Day game against England

There was even a snowstorm in the build up to the match that lasted until less than an hour before kick-off and made both the pitch and the ball slippery, not to mention the freezing conditions that would have bitten at the players' fingers.

Despite the cold, the locals must have enjoyed the idea of a rugby game to welcome the New Year, with 4,000 in attendance.

France threatened to open the scoring and it took a try-saving tackle from Alfie Wood to keep them out.

However, it was England who struck first when Walter Lapage scored a try, worth three points at the time, before setting up William Mills for the second of the game.

Injuries hampered the French defensive efforts and, while they continued to make things difficult for the English, Garnet Portus, John Birkett and Douglas Lambert (although some reports credit Hudson) all crossed for tries.

G.D. Roberts successfully kicked two of the tries into goals, making them worth five points which sealed a 19-0 win. Although England were never in danger of losing this fixture, the impressive French performance gave a taste of the rivalry that was to come.

England captain Thomas Kelly told *Le Matin*: *"Your team [France] have made astonishing progress. We never would have thought that they would hold out with such strength. Their forwards were excellent and Hubert is the player who impressed me the most. From my team, Portus and Brickett played the best."*

The newspaper also made a point of stating that in his praise of the opposition and his teammates, Kelly had forgotten to mention another player who performed brilliantly, himself.

A number of future England Rugby captains played in the game, including Lancelot Slocock and Robert Dibble, while Kelly remains the only Exeter player to have captained England Men.

Sadly, many of the players involved in the game died during the First World War, including Lambert and Slocock from the English side, as well as Pierre Guillemain, Henri Isaac, Gaston Lane and Alfred Maysonnié from Les Bleus.



The two captains, Thomas Kelly (left) and Marcel Communeau (right)

Source: stadium.museedusport.fr / Bibliothèque nationale de France



Cliff Crown, Brentford chair: I'm proud of our progress in 2024

Brentford chair Cliff Crown reflects on 2024 and how the club is building for generations ahead as we head into the festive period

From Brentford Football Club

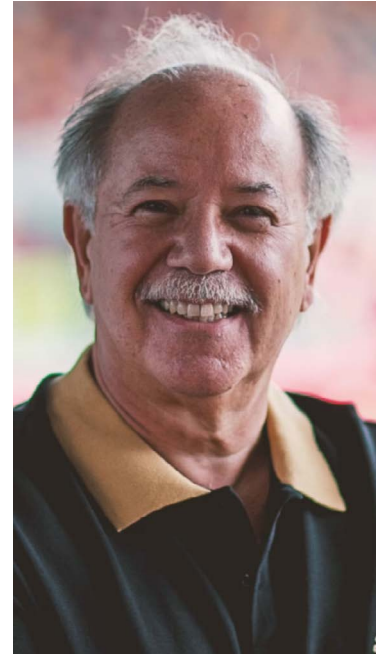
Written by Cliff Crown

I want to start by thanking all of our fans for their incredible support throughout the season so far.

Our progress to date is largely because of the people who work at and support the club. The club and I are grateful for you being with us through the difficult times, as well as our moments of success.

As we head into 2025, it's a good time to look ahead with hope and enthusiasm. And, with that, I want to reflect on how we've been building our club over the last year, while staying true to our roots.

Through diligent planning, we had active transfer windows this year bringing in exciting new talent including Yunus Emre Konak, Igor Thiago, Fábio Carvalho and Gustavo Nunes, to name a few. We also said farewell to one of the most iconic players in the club's history, Ivan Toney, whose goals were instrumental in getting us to the Premier League. We now look to the future with our current squad, as we continue our progress in the top flight.



We're proud of our contribution to the Premier League so far, which has meant we've earned praise for our home form performances and the entertainment we have provided. I can safely say these compliments are a direct result of the tremendous hard work by our football department and players who seek to improve themselves day in, day out.

Across the club, we have continued to see steady progress with our women's teams who have been a joy to watch. Just a few weeks ago, Brentford Women made history by making it to the third round of the Adobe FA Cup. The team have been no stranger to hat-tricks and big scorelines this season, with their biggest result being a 15-0 win against Richmond Park. Brentford Women B have also had a great year, earning promotion from the Greater London Division One North League. We continue to invest in our women's teams, and I look forward to seeing their developments next year.

In May, we also began constructing our new academy facilities at Jersey Road alongside the Robert Rowan Performance Centre. This expansion is to help progress our youth development plans and support the next generation of talent in west London. This has been an exciting opportunity for us, and it's been fantastic to see how our academy is developing, now that we have achieved Category 2 status.

While we have made positive developments on the field, we must also remember those we've lost this year. In April, we sadly lost Paul Bence, who spent almost seven seasons with us for most of the 1970s. After being inducted into our Hall of Fame only last month, former Scottish winger John Docherty died just a couple of weeks ago. John was instrumental in our Fourth Division promotion in the 1971/72 season. Former midfielder and manager Barry Lloyd also passed away this year. The club and I will be thinking of them all and their families during the festive period.

Off the field, we have continued to put affordable football, innovation, sustainability, equity, diversity and inclusion at the centre of the club. Most recently, [we introduced Gen10](#), where travelling junior fans will pay no more than £10 to watch Brentford in the Premier League. We want to ensure football is kept affordable, especially for our young fans so they can enjoy watching the team they love. Initiatives such as Gen10 are a part of our vision where Brentford isn't just a football club, but a force for good. These are building blocks and investments for the future.

This year we also teamed up with Trainline and the *I Came By Train* campaign to give Brentford fans travelling to away matches 20 per cent off train fares. At our recent Fans Forum, CEO Jon Varney also announced that our season ticket prices for 2025/26 will be frozen. At a time where we're still feeling the effects of high living costs, we know the importance of keeping football affordable for our supporters.



We hope Bees fans have felt the impact of improved ticketing policies through Every Seat Counts and measures introduced to tackle ticket touting. We're committed to ensuring that we keep our stadium full of Brentford fans, showing their support for our team. We recognise access to football tickets and the related expense can be a barrier for some, and we want to help build solutions to this.

This season we've also put a lot of effort into elevating our work in sustainability. We recently launched our first-ever sustainability report covering the 2023/24 season. This document lays out how we will approach sustainability and our plans ahead to protect our planet and help our partners and fans to do the same.

We're also immensely proud of our Heart of West London partnership. We held an event in August to mark its two-year anniversary, bringing together partners of the initiative and fans who have played a crucial part in fundraising.

We've been fortunate to have some of our hard work at the club recognised in the industry. Last month, our Thousands of Stories film series was awarded a Broadcast Sport Award for Short Form Content of the Year. Our equity, diversity and inclusion department won a Sports Business Award this month, after picking up a gold Football Business Award in May. This shows the huge strides we've made in this area thanks to our team.

As we bring in the new year, there is a lot to look forward to at Brentford in 2025. We're excited about the challenges ahead as we look to build on our performances to date. We can't wait to see our fans at a rocking Gtech for the rest of the journey ahead.

Wishing you and your family a very Merry Christmas and a happy, healthy New Year.



New national facility for small satellites

From National Physical Laboratory, Teddington

Facility set to boost UK's thriving Earth Observation sector.

NPL and the Science and Technology Facilities Council's (STFC) RAL Space have combined expertise to build a new national centre – the Small Satellite Calibration Facility – for testing and calibrating instruments on small, cube and nano satellites.

In the era of 'new space', a growing number of start-ups and SMEs are venturing into the development of small satellite instruments for diverse Earth observation (EO) applications. Calibrating sensors for these applications is vital to ensure the accuracy and utility of data collected in orbit.

While large satellite missions and programmes might invest in bespoke calibration solutions, this would present a significant barrier for smaller companies, many of which lack the capacity, budget or expertise to develop their own calibration testing facilities.

Supported by experts from RAL Space and NPL, the Small Satellite Calibration Facility is based among RAL Space's existing facilities on Harwell Campus in Oxfordshire, already a bustling campus of over 100 local and international space organisations.

This new facility is set to empower start-ups and SMEs by providing access to world-leading calibration services at short notice and a fraction of the cost. This initiative not only lowers the barrier to entry for aspiring space companies but also gives them a competitive edge through enhanced data quality and more reliable missions.



The Small Satellite Calibration Facility forms part of the UK Government's Department for Science, Innovation and Technology's £200M 'Earth Observation Investment Package' announced in 2022. It will build on existing RAL Space and NPL programmes that support the UK's thriving EO sector, with a particular focus on how EO technology and data can help solve global challenges such as climate change.

Ultimately, this facility will further boost the UK's thriving Earth observation sector, supporting critical data that helps us monitor and protect our planet.

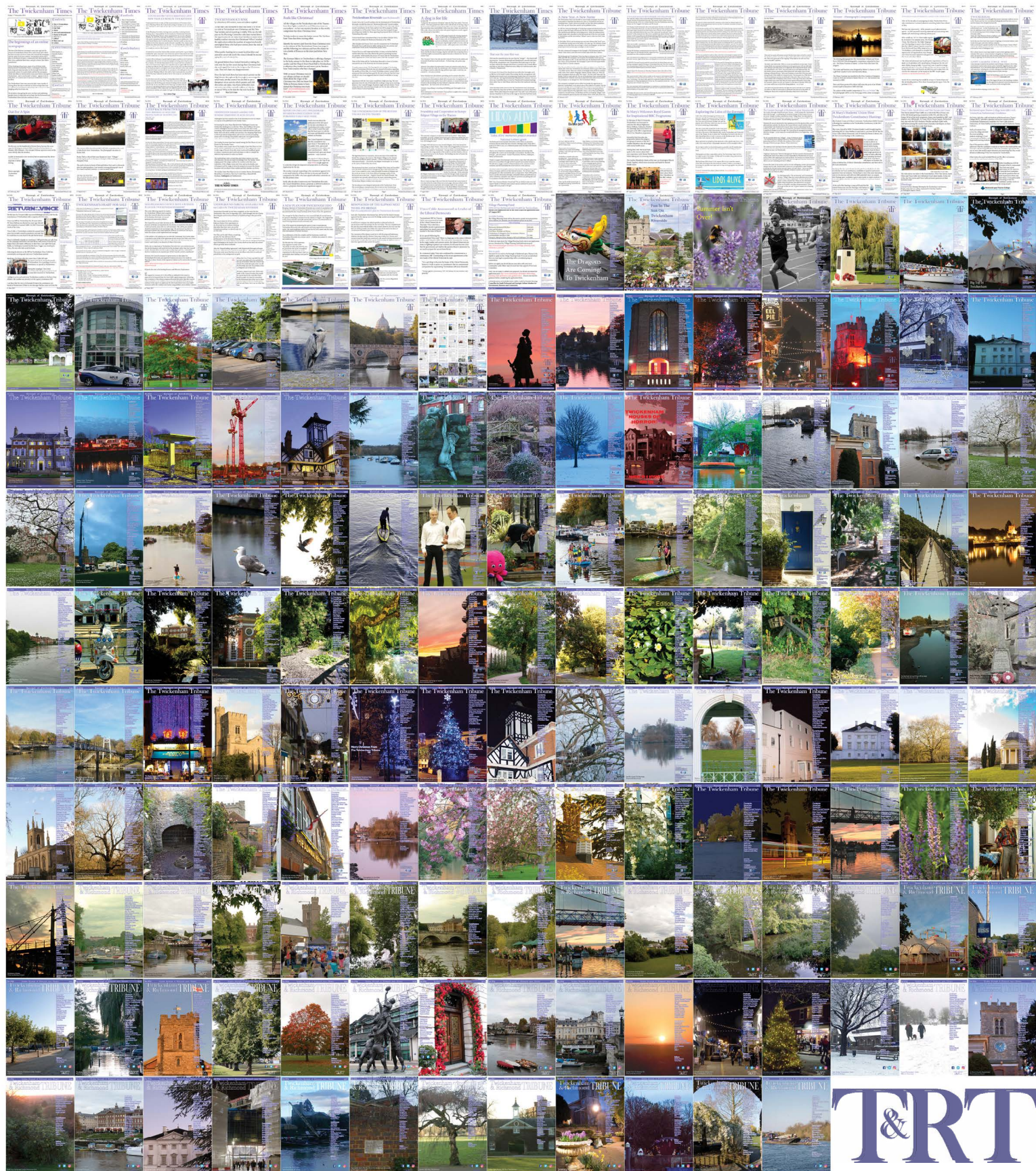
Christopher Baker, NPL Technical Lead for the Small Satellite Calibration Facility, said: "By working together on the Small Satellite Calibration Facility, RAL Space and NPL combine our complementary expertise. This collaboration allows us to offer world-class calibration services to enhance data quality and mission reliability, lower barriers to entry for new space companies, and strengthen the UK's position in the Earth observation sector."

Dr Dan Peters, STFC RAL Space Technical Lead for the Small Satellite Calibration Facility, said: "RAL Space is excited to be working with NPL on this new facility, and to hear from small space companies about how we can support to ensure they're getting the best possible data from their instruments. Ensuring these instruments are calibrated effectively means we can be confident in the information they send back to us on Earth, helping us make better decisions about our planet."

Enquiries about the facility should be directed to SSCFenquiriesRALNPL@stfc.ac.uk



425 editions of the **Twickenham & Richmond Tribune** online - Lots to read: News, Reviews, History, Sports and On-going Sagas in the Borough of Richmond upon Thames



Half Page

Quarter Page
Landscape

Quarter Page Portrait

Eighth Page

Eighth Page
Landscape

Example advert sizes shown above

Thousands read The Twickenham & Richmond Tribune

If you are reading this you could be advertising your business with
The Twickenham & Richmond Tribune. Community rates are
available

Contact: advertise@TwickenhamTribune.com

View ad details at www.TwickenhamTribune.com/advertise

Contact

contact@TwickenhamTribune.com
letters@TwickenhamTribune.com
advertise@TwickenhamTribune.com



Published by:

Twickenham & Richmond Tribune (in association with World InfoZone Limited)

Registered in England & Wales

Reg No 10549345

The Twickenham Tribune is registered with the ICO under the Data Protection Act, Reg No ZA224725

©Twickenham & Richmond Tribune. All rights reserved. No part of this publication may be used or reproduced without the permission of Twickenham & Richmond Tribune. While we take reasonable efforts, this online newspaper cannot be held responsible for the accuracy or reliability of information. The views and opinions in these pages do not necessarily represent those of The Twickenham & Richmond Tribune.

[Terms & Conditions](#)